

*at Riverside . . . well equipped comes standard*

**LIGHT PACKAGE**

- Exterior Storage Compartment Lights
- Entry Door Step Light
- Hitch Light
- Porch Light
- ODS Utility Light
- Awning Light Outlet
- Bedroom Night Lights
- Recessed Ceiling Lights in Galley
- Contoured Soffit w/ Recessed Lighting Over Sofa

**APPEARANCE PACKAGE**

- Premium Shadow Box Slideroom Window Treatment w/ Nite Shades
- Decorative Bedroom Window Treatments w/ Night Shades
- Black, Radius Framed Windows w/ Dark Tinted Glass
- Wood Louvered Furnace Air Return
- Wanes Coat Wall Treatment
- Deluxe Master Bedroom Headboard
- Hardwood Cabinet Doors
- Hardwood Drawer Fronts with Roller Bearing Guides
- Hardwood Cabinet Frames Drilled & Screwed Together
- Granite Look Counter Tops w/ Back Splash
- Mirrored Shirt Wardrobe Cabinet Doors
- Contoured Wheel Fender Skirts
- 30" Radius Entry Doors

**EXTERIOR**

- 1 Yr. 24-7-365 Road Side
- Tire Change Assistance
- A&E Awning
- Exterior Speakers
- Hot/ Cold Outside Shower
- Door Side Cable Jack
- Swing out Grab Handle
- TV Ant. w/ Power Booster
- DSI Gas/ Electric HWH
- Dual Battery Rack
- Battery Disconnect Switch
- (2) 30# LP Tanks
- LP Cover w/ Valve Access
- 1 Piece Rubber Roof
- Extended Gutter Spouts
- Walk on Roof 16 oc Rafters
- Diamond Plate Ft. Guard
- Scratch Resistant Lower
- Exterior Metal
- Radius Luggage Doors
- Electric Slide Rooms
- (4) Stabilizer Jacks
- Triple, Radius Entry Steps
- Ultra Lube 5200# Axles
- Spare Tire, Carrier & Cover

**INTERIOR**

- 60 amp Progress. Dynamic Converter
- 80" Ceiling Height (Most Models)
- 13.5 BTU Roof Air
- Forced Air Furnace
- LP, Smoke, CO, Detectors & Fire Ext.
- HWH By Pass Kit
- Large Country Style Galley Sink
- Microwave Oven
- 3 Burner Range w/ Oven & Cover
- 4 Galley Receptacle Outlets
- Dometic Double Door Refrigerator
- DVD, CD, MP3 Jack, AM FM Stereo
- Hinged Lower Sofa Front
- 2 Sofa Pillows
- Cabinet Doors Under Dinette Seats
- Bedroom TV Hook up
- Bedroom Roof Vent
- Pillow Top Mattress w/ Bedspread
- Master Bed Gas Struts
- ABS Tub Surround
- Hardwood Medicine Cabinet
- Wall Mount Blow Dryer w/ Nite Light
- China Foot Flush Toilet
- Towel Ring
- Power Roof Vent in Bath

MODEL	25 RBS	26 DBS	29 RKS	29 RLS	30 FKS	30 LOFT	30 LOFT-K	31 BHS-K	39 KQS	39 KBS
TYPE	(1) SLIDE	(1) SLIDE	(1) SLIDE	(1) SLIDE	(2) SLIDE	(1) SLIDE	(1) SLIDE	(2) SLIDE	(2) SLIDE	(2) SLIDE
HITCH WEIGHT	460	540	770	780	940	700	700	1020	1400	1400
AXLE WEIGHT	5480	5800	6470	6510	6740	6240	6240	6800	7540	7540
NCC	4460	4060	3160	3110	2720	3460	3460	2580	1460	1460
GVWR	10400	10400	10400	10400	10400	10400	10400	10400	10400	10400
LENGTH	29' 4"	30' 11"	34' 0"	34' 0"	35' 1"	31' 8"	31' 8"	36' 1"	39' 8"	39' 8"
WIDTH	8'	8'	8'	8'	8'	8'	8'	8'	8'	8'
HEIGHT	11'	11'	11'	11'	11'	12' 6"	12' 6"	11'	11'	11'
FRESH WATER	45	45	45	45	45	45	45	45	45	45
GREY WATER	35	35	35	35	35	35	35	35	35	35
BLACK WATER	35	35	35	35	35	35	35	35	35	35

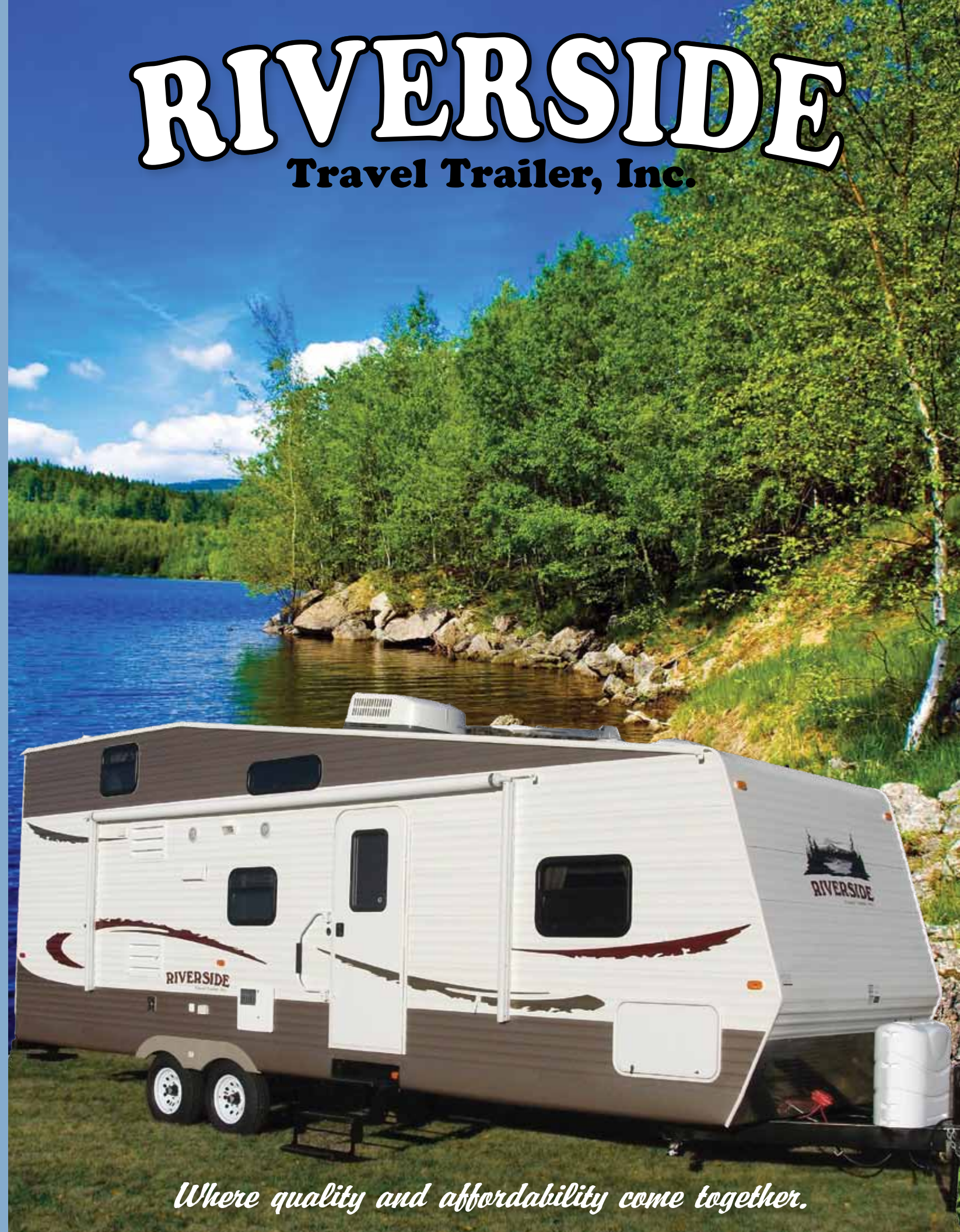
All information is accurate at time of publication. Floor plans, specifications or features may change without advanced notice. All weights, measurements and capacities are approximate and dimensions are nominal.

**YOUR LOCAL DEALER**

**RIVERSIDE**  
Travel Trailer, Inc.  
PO Box 1099 • Peru, IN 46970  
765-472-3920  
[www.riversidetrailer.com](http://www.riversidetrailer.com)

# RIVERSIDE

## Travel Trailer, Inc.



*Where quality and affordability come together.*





Our 30 FKS features a spacious kitchen with a tremendous amount of storage space



The air hide a bed sofa sleeper and elegant oak dining table and chairs are very popular options (shown in sage decor)



30 Loft . . . Our "Most Unique" model has an upstairs bunk room which accommodates 3 comfortably



The living area features our premium shadow box slide room window treatments (shown in espresso decor)

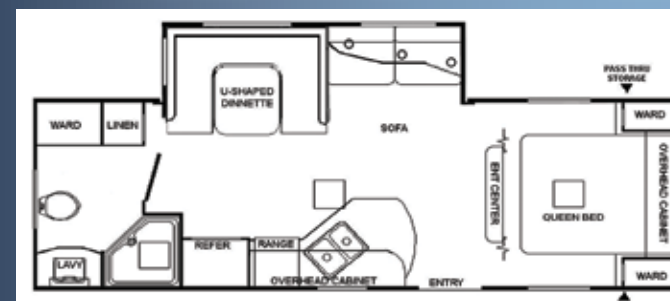


Cooking outside just got a lot easier. Exterior kitchens are offered as standard equipment on our 30 Loft-K and 31 BHS-K models

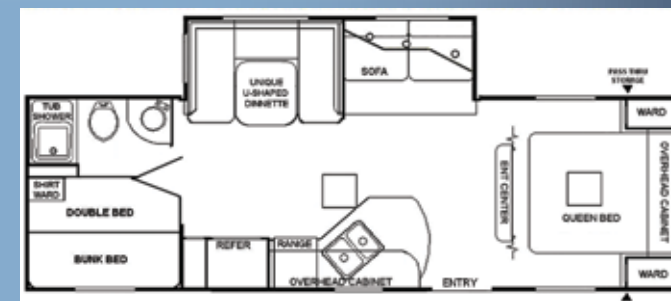


You will sleep well in your beautifully designed bedroom featuring a luxurious pillow top mattress.

Offered in several desirable floorplans, all at an affordable price.



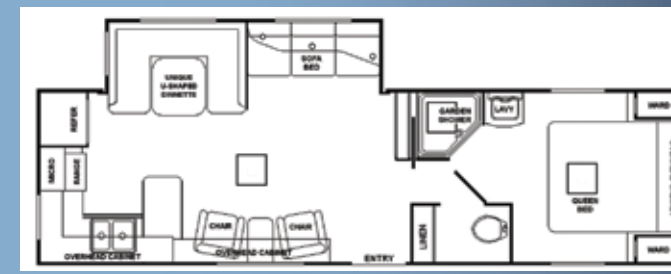
**25 RBS**



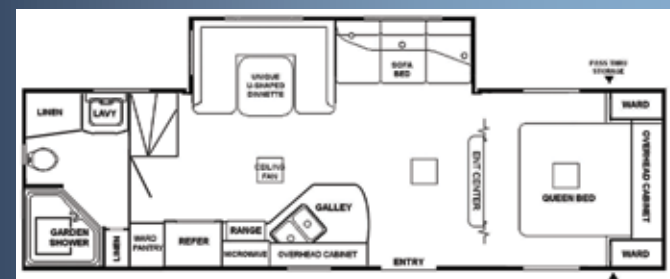
**26 DBS**



**29 RLS**



**29 RKS**



**30 LOFT**

**Features an Upstairs Bunk Loft**



**30 LOFT-K**

**Features an Upstairs Bunk Loft**



**30 FKS**



**31 BHS-K**



**39 KQS**

*Destination Model*



**39 KBS**

*Destination Model*